

U22 Fukuoka Pattern



Oil Pattern Distance: 42 Feet **Reverse Brush Drop:** 42 Feet **Oil Per Board:** 40 uL
Forward Oil Total: 16.56 mL **Reverse Oil Total:** 14.04 mL **Volume Oil Total:** 30.6 mL
Forward Boards Crossed: 414 Boards **Reverse Boards Crossed:** 351 Boards **Total Boards Crossed:** 765 Boards

	Start	Stop	Loads	Speed	Crossed	Start	End	Feet	T.Oil
1	7L	7R	5	14	135	0.0	7.9	7.9	5400
2	8L	8R	3	14	75	7.9	13.8	5.9	3000
3	9L	9R	3	14	69	13.8	19.7	5.9	2760
4	10L	10R	3	14	63	19.7	25.6	5.9	2520
5	12L	10R	2	18	38	25.6	30.7	5.1	1520
6	14L	10R	2	18	34	30.7	35.8	5.1	1360
7	14L	10R	0	26	0	35.8	42.0	6.2	0

◀ ▶ ⏪ ⏩ Forward Reverse More

	Start	Stop	Loads	Speed	Crossed	Start	End	Feet	T.Oil
1	2L	2R	0	22	0	42.0	37.0	-5.0	0
2	14L	10R	2	18	34	37.0	31.9	-5.1	1360
3	12L	10R	1	18	19	31.9	29.4	-2.5	760
4	10L	9R	2	18	44	29.4	24.3	-5.1	1760
5	10L	8R	3	18	69	24.3	16.7	-7.6	2760
6	8L	7R	1	14	26	16.7	14.8	-1.9	1040
7	6L	6R	1	14	29	14.8	12.9	-1.9	1160
8	5L	5R	2	14	62	12.9	9.0	-3.9	2480
9	4L	4R	1	10	33	9.0	7.6	-1.4	1320
10	3L	3R	1	10	35	7.6	6.2	-1.4	1400
11	2L	2R	0	10	0	6.2	0.0	-6.2	0

◀ ▶ ⏪ ⏩ Forward Reverse More

Conditioner:
Type In or Select
One

TransferType:
Transfer Brush

Forward



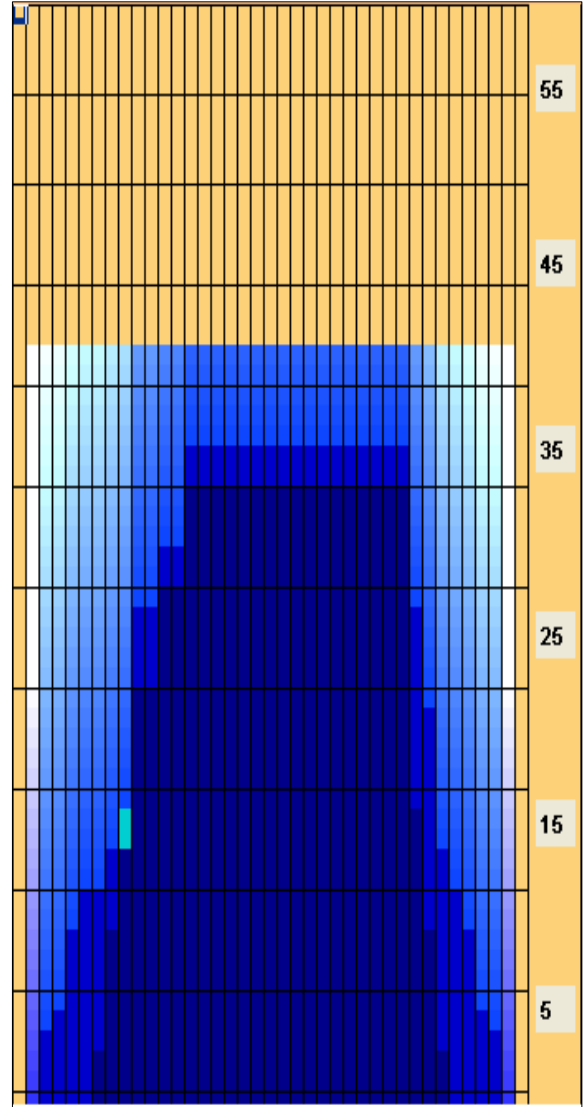
Reverse



Combined



Buff



Conditioner POLYCHEM CEO 4 2
 Cleaner POLYCHEM ST 2 0 0 0 (40-fold dilution)

Item	3L-7L:18L-18R	8L-12L:18L-18R	13L-17L:18L-18R	18L-18R:17R-13R	18L-18R:12R-8R	18L-18R:7R-3R
Description	Outside Track:Middle	Middle Track:Middle	Inside Track:Middle	Middle: Inside Track	Middle:Middle Track	Middle:Outside Track
Track Zone Ratio	7.27	1.47	1.03	1	1.19	6.96

